

Model/Sample Paper

General Knowledge:

1. Fathometer is used to measure

- A. Earthquakes
- C. Ocean depth

- B. Rainfall
- D. Sound intensity

Answer: Option C

2. For purifying drinking water alum is used

- A. for coagulation of mud particles
- B. to kill bacteria
- C. to remove salts
- D. to remove gases

Answer: Option A

3. Hockey was introduced in the Asian Games in

- A. 1958 in Tokyo
- B. 1962 in Jakarta
- C. 1966 in Bangkok
- D. 1970 in Bangkok

Answer: Option A

4. Entomology is the science that studies

- A. Behavior of human beings
- B. Insects
- C. The origin and history of technical and scientific terms
- D. The formation of rocks

Answer: Option B

Aptitude:

1. A alone can do a piece of work in 6 days and B alone in 8 days. A and B undertook to do it for Rs. 3200. With the help of C, they completed the work in 3 days. How much is to be paid to C?

- A. Rs. 375
- C. Rs. 600

- B. Rs. 400
- D. Rs. 800

Answer: Option B

2. The cost price of 20 articles is the same as the selling price of x articles. If the profit is 25%, then the value of x is:

A.15
C.18

B.16
D.25

Answer: Option **B**

3. An aeroplane covers a certain distance at a speed of 240 kmph in 5 hours. To cover the same distance in $1\frac{2}{3}$ hours, it must travel at a speed of:

A.300 kmph
C.600 kmph

B.360 kmph
D.720 kmph

Answer: Option **D**

4. If a person walks at 14 km/hr instead of 10 km/hr, he would have walked 20 km more. The actual distance traveled by him is:

A.50 km
C.70 km

B.56 km
D.80 km

Answer: Option **A**

Logical Reasoning:

1. Soumya is older than Ananya.

Arnav is older than Soumya.

Ananya is older than Arnav.

If the first two statements are true, the third statement is

A.true

B.false

C.uncertain

Answer: Option **B**

2. Question has an underlined word followed by four answer choices. You will choose the word that is a necessary part of the underlined word.

book

A.fiction

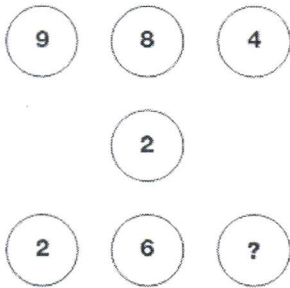
C.pictures

B.pages

D.learning

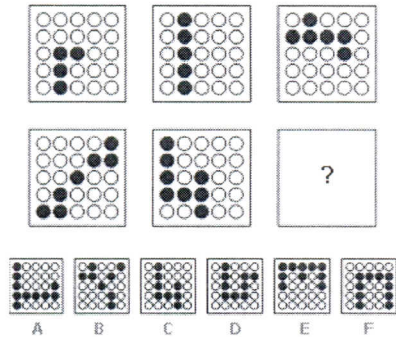
Answer: Option **B**

Which number replaces the question mark?



Answer : 7

What is missing in the last grid?



Answer : D

Environment:

1. What do you call the rain that contains chemical waste and causes damage to plants and animals?

Choose one of the following:

Smog

Acid rain

Monsoon rain

Seasonal rain

2. Sea level is expected to rise because of warmer climate due to the following:

- Oceans expand as they get warmer
- Glaciers and ice-sheets melt
- Both the above

3. Over the last 100 years global sea level has risen by about

- 20 - 25 cm
- 10 - 12.5 cm
- Both the above
- None of these

Comuter Science & IT

1. Question: IC chips used in computers are usually made of

1. Lead
2. Silicon
3. Chromium
4. Gold

Answer: 2

2. Question: One kilobyte is equal to

1. 1000 bytes
2. 1024 bytes
3. 100 bytes
4. 1023 bytes

Answer: 2

3. Question: Which of the following is not an example of Operating System?

1. Windows 98
2. BSD Unix
3. Microsoft Office XP
4. Red Hat Linux

Answer: 3

4. Question: Which supercomputer is developed by the Indian Scientists?

1. Param
2. Super 301
3. Compaq Presario
4. CRAY YMP

Answer: 1

5. Question: One Gigabyte is Approximately equal is

1. 1000,000 bytes
2. 1000,000,000 bytes
3. 1000,000,000,000 bytes
4. None of these

Answer: 2